

FROGGYMOUTH

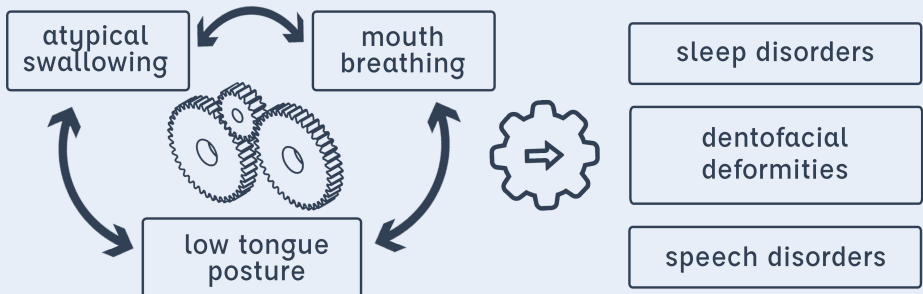
Correct swallowing function
and tongue posture
in 15 minutes a day

INSTRUCTIONS FOR ADOLESCENT
AND ADULT PATIENTS



You have been prescribed a FroggyMouth




This device corrects swallowing function by creating a new pattern: during the swallowing, the teeth come lightly in contact and the tongue pushes against the palate.



All of these clinical conditions have one thing in common: they are all related, in different ways, to tongue posture.

In fact, at present, 1/3 of the adult population still suffers from dysfunctions.

By correcting swallowing dysfunction, FroggyMouth helps to:

-  Shorten the **duration of the treatment**
-  Improve the **quality of results**
-  Reduce the **risk of relapse**

FroggyMouth is compatible with all other orthodontic appliances (removable devices, braces or aligners, for example).

How does FroggyMouth work ?

FroggyMouth should be worn 15 minutes a day, in front of a TV. While the patient wears the device, the swallow pattern changes automatically without disrupting sleep quality.

Please follow carefully **FroggyMouth Rules of Use:**



Wear it, once or twice, for 15 minutes a day, to quickly and effectively develop a new way of swallowing. Routine is essential.

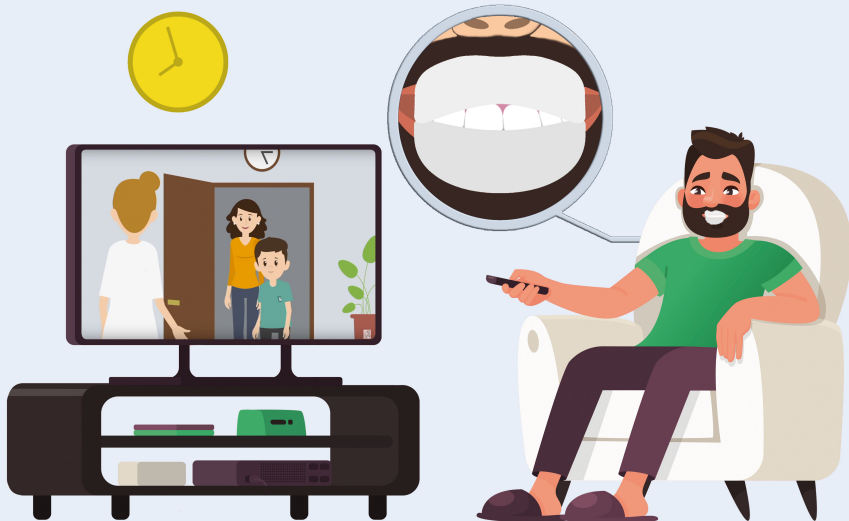


Wear in front of a raised TV screen or computer. Avoid any posture with a bowed head.





The patient's attention should be held by the screen so that the new way of swallowing becomes automatic and natural.




How to wear FroggyMouth ?



3 key things to remember

 It is normal to experience increased saliva when wearing the device, especially in the first days of use; if this lasts longer than 10 days let your specialist know.

 Observe several times a day and report to your specialist at the next appointment :

-  Your tongue posture at rest
-  Your neck & shoulders relaxation
-  Your sleep quality improvements

 You must wear the device **EVERY** day. If you remove the device during the 15-minute period, **start again**.

Cleaning the device



Clean it with your toothbrush and toothpaste or with alcohol-free mouthwash.

Dry it completely and put it back in its box.

For more information about how this device works, visit:

www.froggy.com

Please follow your practitioner's advices

Froggy is a medical device made 100% in France.
It does not contain latex or phthalates, and it is CE & FDA certified.
All our devices are packed in WISE (Work Integration Social Enterprise).



ATFC Ltd

311 Viola Street
Oshawa, ON, L1H 3A7 Canada
1-800-267-8463 1-416-347-9647
info@atfcnorthamerica.com
www.atfcnorthamerica.com

